

BIOVIA INSIGHT

Datasheet



BIOVIA Insight is a web-based application that allows scientists to search for, refine and analyze their data and share information and insights with their discovery teams and other collaborators, enabling cross-functional and cross-enterprise decision support.

BIOVIA Insight is designed to support end-to-end scientific workflows in a simple and intuitive way, including collaboration within scientific teams, allowing more accurately and timely decision making. It addresses specific problems across the entire workflow, including:

- **Scientific data access:** Getting all the necessary information quickly and easily
- **Scientific data analysis:** Providing access to analysis techniques and algorithms
- **Scientific data visualization:** Presenting the data in scientifically meaningful ways to aid interpretation
- **Collaboration:** Supporting team-based decision-making

INSIGHT CAPABILITIES:

BIOVIA Insight allows members of a research team to make timely, informed decisions about their projects, with capabilities including:

- **Searching & importing data** – Access data from multiple databases from in-house and web sources, from files or through a pre-defined data gathering and processing workflow.
- **Browsing** – Data can be browsed live against the source database and also against project team data extracts, using the same, user-definable browse forms.
- Use BIOVIA Insight to **Search and Browse** BIOVIA Content using familiar forms to those of ISIS and Isestris, link out to journal references, view GHS and Safety Datasheets (SDS) from BIOVIA ACD (an additional license may be required for the BIOVIA Content).
- **List Combinations** – Saved lists and recent queries can be further refined using list logic operations: Union, Intersect or NOT.
- **Filtering and combining data** – Retrieved data can be refined by filtering and supplemented with additional data, from the same sources (searches and data import), ensuring that the right data is always available.
- **Visualization** – A variety of linked and interactive views of data are provided and can have conditional formatting defined and applied on them, these include; tables, forms, charts and scientific visual analytics. Standard views can be provided so the user can define their own views through simple drag and drop. Drill-down views provide more detail on higher level overview panels. Custom visualizations can be created.
- **Calculation and analytics** – Integrated calculations and advanced scientific analytics methods can be applied directly to the data and the results of those analytics visualized.
- **Personal Data Sources and Team Collaboration** – Scientists can load, analyze and visualize data and results and provide access to collaborators and teams, creating a team workspace where other team members can add additional data, analysis, commentary and insight.

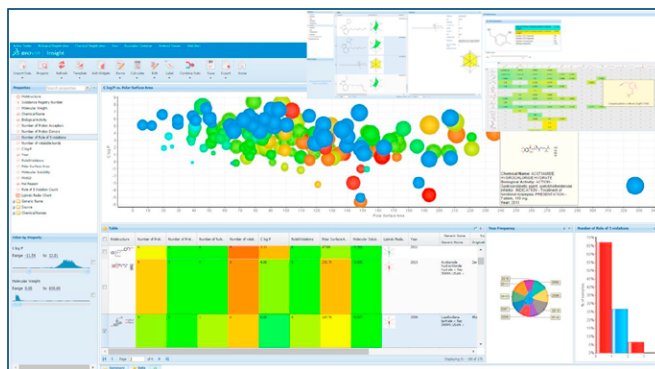


Figure 1. Visualize your data with charts, tables, and single record views.

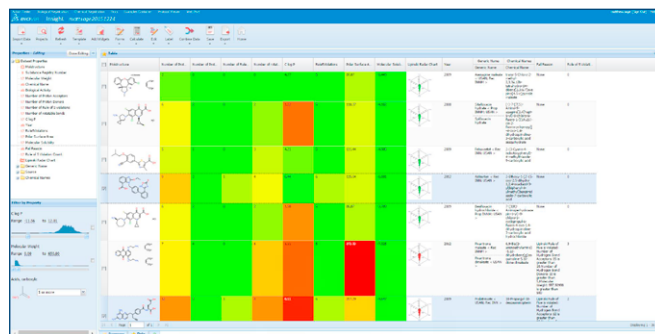


Figure 2. Browse and search results in user-definable forms that can contain hierarchical data.

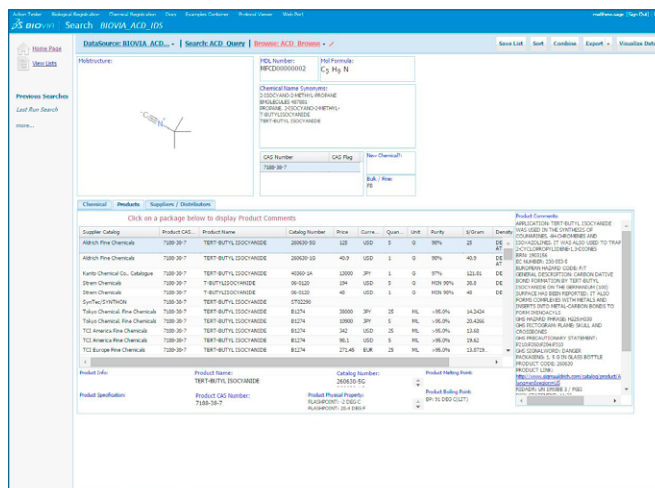


Figure 3. Filter your data to reveal key items and relationships

- **Templates** – Run calculations, apply filters and define layouts that can be reused and applied to common data sets
- **Refresh** – Refresh project data extracts by appending new information and update existing data whilst persisting the project layout and annotations
- **Export** – Export data in many forms to be consumed by other applications or for reporting
- **Configuration and extensibility**
 - The application automatically tailors itself to individual scientists, presenting them with recent activities, data, and analyses shared by colleagues.
 - Working with the intuitive web interface, scientists can then further tailor the BIOVIA Insight experience to their workflows and preferences.
 - Developers can extend BIOVIA Insight through the development of protocols in the BIOVIA Foundation to provide specific scientific calculations, new visualizations, exports, and reports tailored to their company's specific needs and expertise.

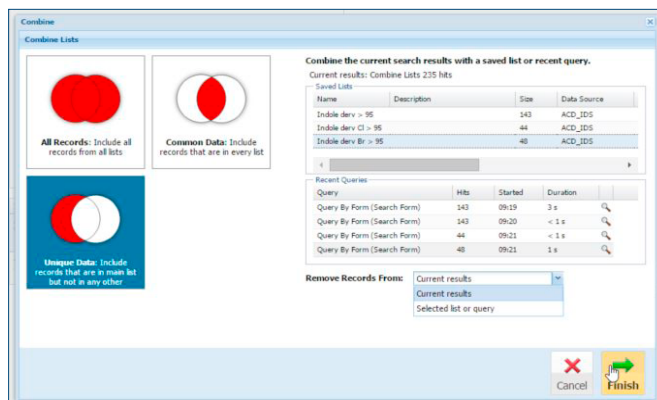


Figure 4. Use browse forms against database and extracted data.

BIOVIA INSIGHT IS THE NEXT GENERATION OF LEGACY PRODUCTS ACCORD ENTERPRISE, ISIS, AND ISENTRIS

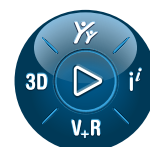
BIOVIA Insight is not a direct reimplementation of any of the legacy products that it will replace. Critical workflows that can be achieved with our legacy products will be maintained in BIOVIA Insight. BIOVIA Insight has been designed to reflect today's needs and paradigms.



Our 3DEXPERIENCE® platform powers our brand applications, serving 11 industries, and provides a rich portfolio of industry solution experiences.

Dassault Systèmes, the 3DEXPERIENCE Company, is a catalyst for human progress. We provide business and people with collaborative virtual environments to imagine sustainable innovations. By creating 'virtual experience twins' of the real world with our 3DEXPERIENCE platform and applications, our customers push the boundaries of innovation, learning and production.

Dassault Systèmes' 20,000 employees are bringing value to more than 270,000 customers of all sizes, in all industries, in more than 140 countries. For more information, visit www.3ds.com.



3DEXPERIENCE®